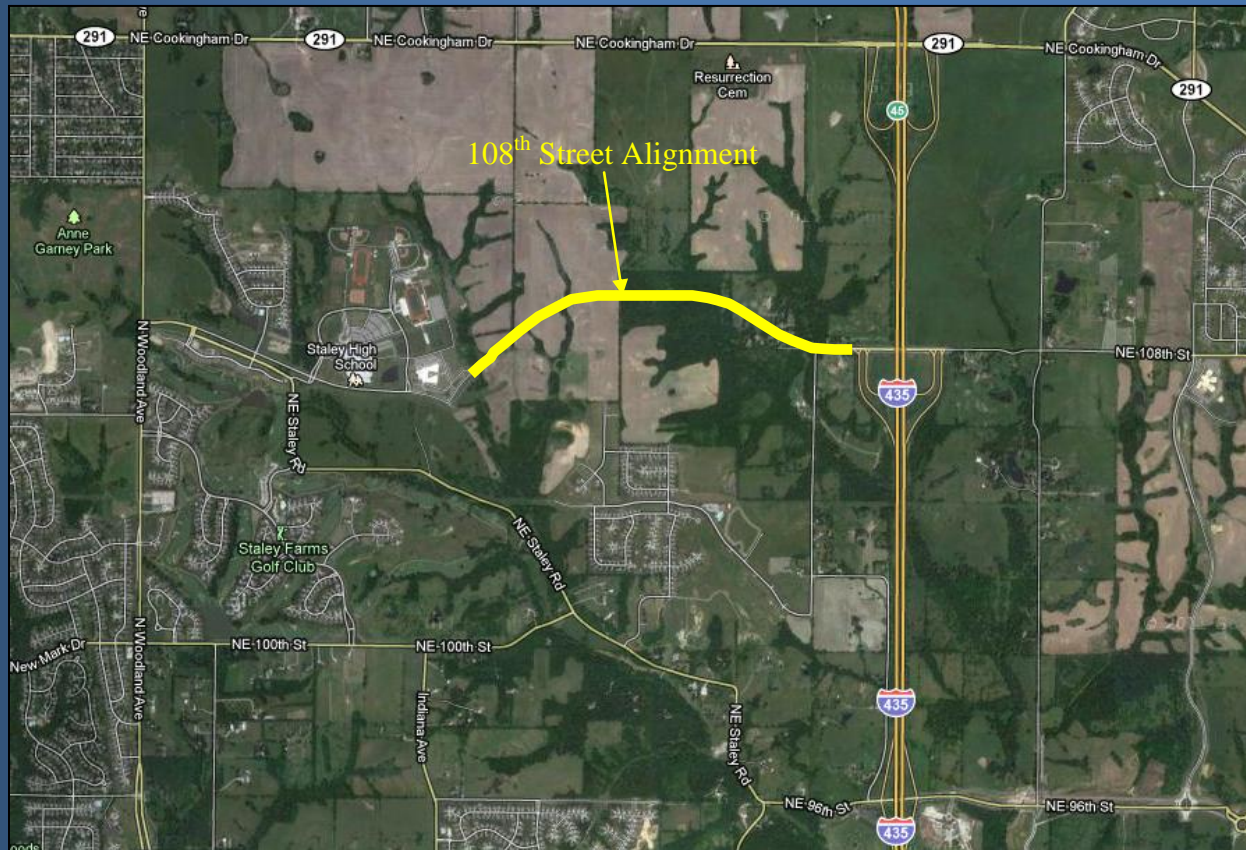


# N.E. 108<sup>th</sup> Street from I-435 to Shoal Creek Parkway Project Update

12-2-11



**Hunt Midwest**



## Construction

Construction began November 9, 2011.

## Construction Progress

Utility Relocation – 0% complete  
Clearing – 100% complete  
Box Culverts – 50% complete  
Grading – 0% complete  
Storm Sewer – 0% complete  
Curbs – 0% complete  
Paving – 0% complete  
Streetlights – 0% complete  
Landscaping – 0% complete

**Construction scheduled to be  
complete in the fall of 2012 pending  
favorable weather**

