

Shoal Creek Parkway Project Update

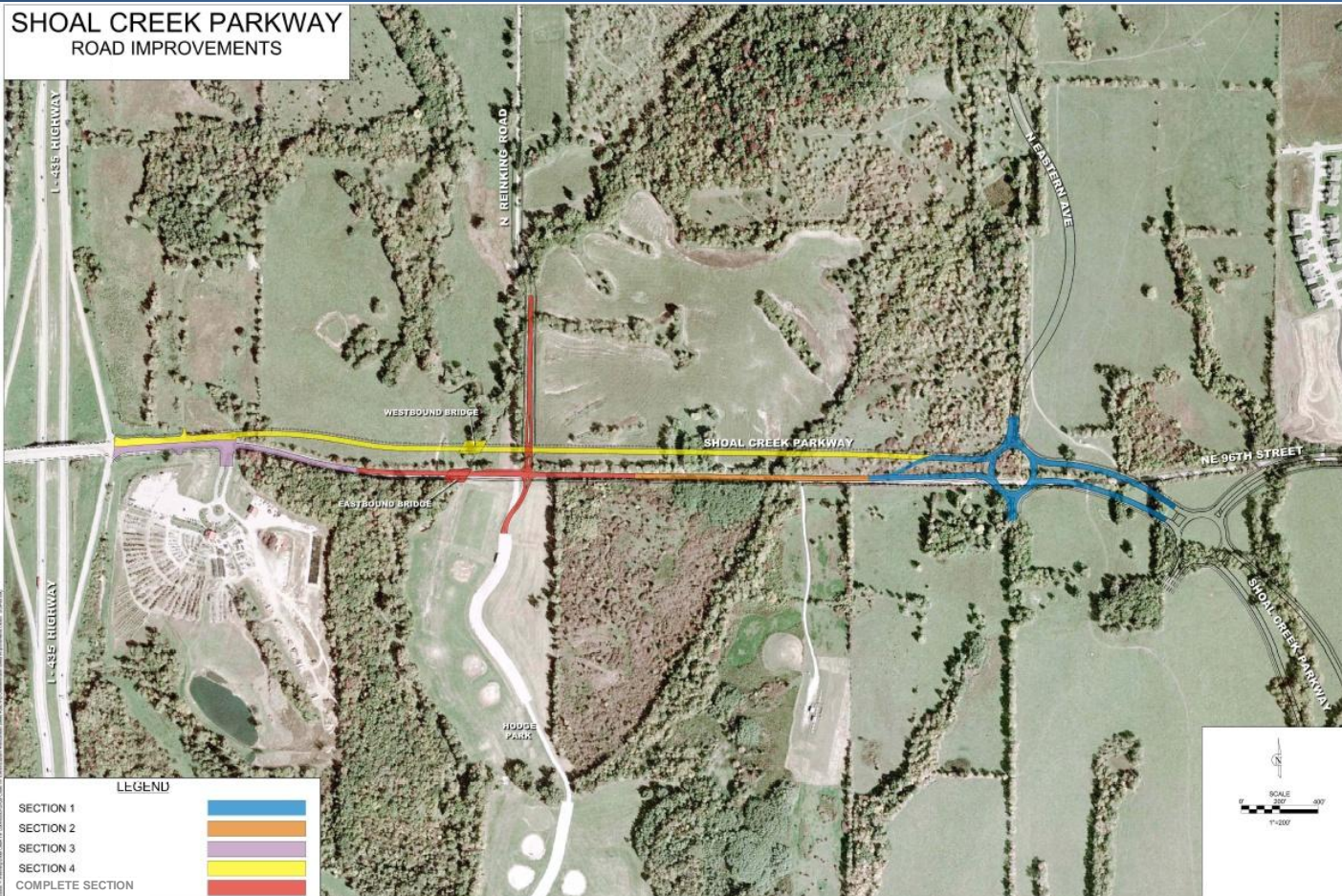
5-2-11



HUNT MIDWEST
RESIDENTIAL DEVELOPMENT



SHOAL CREEK PARKWAY ROAD IMPROVEMENTS



**Sections 1, 2 and 3 are complete
and open to traffic.**

Section 4 Construction

Bridge Abutments – 100% complete
Retaining Walls – 60% complete
Bridge Girders – 100% complete
Bridge Deck – 85% complete
Road Connection – 80% complete

**Completion of Section 4
scheduled for the summer of 2011**

Notice: Reinking Road at Shoal Creek Parkway will close 5-9-11 to construct the road connection to the new bridge. Shoal Creek Parkway will remain open with reduced lane widths for westbound traffic. Please drive with caution.

Shoal Creek Parkway Kansas City, MO

MAY 2010



AUGUST 2010



NOVEMBER 2010

